

\$319,900 - 9606 119 Avenue Nw, Edmonton

MLS® #E4237162

\$319,900

3 Bedroom, 3.00 Bathroom, 1,041 sqft
Condo / Townhouse on 0 Acres

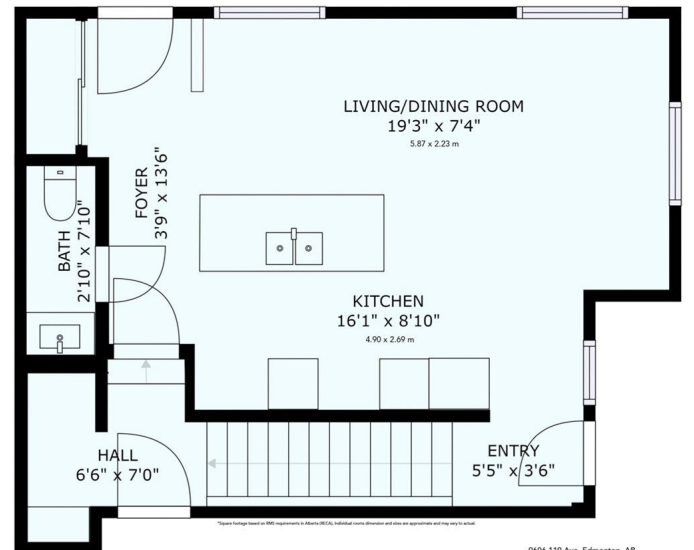
Alberta Avenue, Edmonton, AB

Brand new, MODERN & CHIC! Live a CENTRAL LOCATION close to all amenities including Downtown & NAIT along a TREE LINED street. EYE CATCHING curb appeal lures you in. The TILED ENTRY leads to the open, BRIGHT living room finished w/ WIDE PLANK flooring. Cook in the ULTRA MODERN kitchen featuring METALLIC finished cabinetry w/ soft close features, QUARTZ counters & an extended BREAKFAST BAR, perfect for dinner parties. The main floor 2-piece guest bath is super convenient. Upper floor has a MAGNIFICENT 4-piece bathroom, LAUNDRY area, 2 spacious bedrooms including a master suite w/ a 3-piece ensuite featuring a DOUBLE WIDE SHOWER & an extra upper side window to bring in NATURAL LIGHT. Base-Mint! HIGH CEILINGS, fully finished w/ a SECOND KITCHEN with quartz counters, bedroom, living room, 4-piece bath, large windows, LAUNDRY ROOM and MORE. Park in the single DETACHED GARAGE to keep your car cozy. HIGH-END finishingâ€™s throughout, truly IMPRESSIVE. See it youâ€™ll LOVE this place.

Built in 2020

Essential Information

MLS® #	E4237162
Price	\$319,900
Bedrooms	3



9606 119 Ave, Edmonton, AB
Multi-Family/Townhouse
2 & 4 Bedroom (Mint) (Mint)
Total Inside Perimeter (AG): 195 ft
Total Inside Area (AG): 1041 sq ft / 96.71 m²
Total Square Footage (RMS): 1041 sq ft / 96.71 m²
Garage: 11.4 x 21.64 ft, 7.34 x 6.60 m

TOTAL SQUARE FOOTAGE OF MAIN FLOOR: 514 sq ft. / 47.75 m²
TOTAL SQUARE FOOTAGE ABOVE GRADE (RMS): 1041 sq ft. / 96.71 m²
SIZES AND DIMENSIONS ARE APPROXIMATE, ACTUAL MAY VARY.

Bathrooms	3.00
Full Baths	3
Square Footage	1,041
Acres	0.00
Year Built	2020
Type	Condo / Townhouse
Sub-Type	Half Duplex
Style	2 Storey
Status	ACTIVE
Legal Plan Number	2021923

Community Information

Address	9606 119 Avenue Nw
Area	Edmonton
Subdivision	Alberta Avenue
City	Edmonton
County	ALBERTA
Province	AB
Postal Code	T5G 1V6

Amenities

Features	Exterior Walls- 2x6', No Animal Home, No Smoking Home, Vinyl Windows
Parking Spaces	2
Parking	Double Garage Attached
# of Garages	2

Interior

Interior	Carpet, Ceramic Tile, Vinyl Plank
Interior Features	See Remarks
Heating	Forced Air-1
Has Basement	Yes
Basement	Full, Fully Finished
# of Stories	3

Exterior

Exterior	Vinyl
Exterior Features	Back Lane, Corner, Flat Site, Playground Nearby, Public Transportation, Schools, Shopping Nearby

Roof Asphalt Shingles

Construction Wood Frame

Foundation Concrete

School Information

Elementary Delton School

Middle Spruce Avenue School

High Victoria

Listing Details

Listing Office Courtesy Of Ryan Dutka Of RE/MAX River City

Listing information last updated on May 7th, 2021 at 10:16pm MDT